





▪ 1. SAFETY PRECAUTION	2
▪ 2. FEATURES	2
▪ 3. ACCESSORIES	3
▪ 4. CONTROL PANEL	3
▪ 5. Remote Control	4
▪ 6. CONNECTION	5
▪ 7. GETTING STARTED	6
I.1 First Installation	6
I.2 Main MENU	6
I.3 Shortcut Keys	6
I.4 Recording (PVR)	7
I.5 Timeshift (PVR)	8
▪ 8. INSTALLATION	9
II.1 Satellite Setup	9
II.2 Satellite List	9
II.3 TP List	9
II.4 USALS Setup	10
II.5 Motor Limit Setup	10
▪ 9. SYSTEM SETUP	11
III.1 OSD Setup	11
III.2 Video Setup	11
III.3 Audio Setup	11
III.4 Time Setup	12
III.5 Password Setup	12
III.6 Access Control	12
III.7 Network Setup	12
III.8 S/W Upgrade	13
III.9 Version (FTA S/W version only)	13
III.10 Factory Reset	13
▪ 10. EDIT CHANNEL	14
IV.1 Edit Channel	14
IV.2 Edit Favorite	14
IV.3 Edit PIDs	14
IV.4 Edit Boot Channel	14
IV.5 Delete All Channel	14
IV.6 Load DB	14
IV.7 Save DB	14
▪ 11. PVR SETUP	15
V.1 PVR File Format	15
V.2 Max File Size	15
V.3 Default PVR Storage	15
V.4 Timeshift Mode	15
V.5 Timeshift Length	15
V.6 Timeshift to Record	15
V.7 ***Factory Menu	15
▪ 12. GAME & MULTIMEDIA	16
VI.1 Native Games	16
VI.2 Game Download	16
VI.3 Google MAP, Yahoo Weather and Web Photo	16
VI.4 YouTube	17
VI.5 Internet VOD	17
VI.6 Google Email (Gmail)	17
VI.7 USB Media Player	18
▪ 13. TROUBLE SHOOTING	19
▪ 14. TECHNICAL SPECIFICATIONS	20

## SAFETY PRECAUTION

---

### WARNING:

- To reduce the risk of fire or electric shock, do not expose this equipment to rain or moisture.
- The apparatus shall not be exposed to dripping or splashing and that no objects filled with liquid, such as vases, shall be placed on the apparatus.
- To reduce the chance of fire, electric shock, or annoying interference, use only the recommended accessories.
- The mains plug is used as the disconnect device, the disconnect device shall remain readily operable.
- Keep not less than 5cm distances around the apparatus for sufficient ventilation.
- Keep the ventilation should not be impeded by covering the openings with items such as newspapers, table-cloths, curtains, etc.
- The label was silk-printed on the exterior of the bottom of the apparatus.
- No naked flame sources, such as lighted candles, should be placed on the apparatus.
- Batteries shall not be exposed to excessive heat such as sunshine, fire or the like.
- Correct Disposal of this product.



This marking indicates that this product should not be disposed with other household wastes throughout the EU. To prevent possible harm to the environment or human health from uncontrolled waste disposal, recycle it responsibly to promote the sustainable reuse of material resources. To return your used device, please use the return and collection systems or contact the retailer where the product was purchased. They can take this product for environmental safe recycling.

## FEATURES

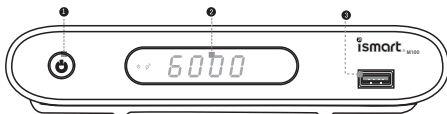
---

- 667MHz High Speed MIPS Processor
- MPEG-Fully DVB-S / DVB-S2 HD compliant
- USB Wifi, GPRS and 3G modem Support
- YouTube, Internet VOD, Picasa, Flickr and Yupoo
- Weather forecast & Google Map Functions
- Games Dowload and Gmail Functions
- Ethernet Connection
- Full HD 1080p Output via HDMI
- True-color On-Screen Display (OSD)
- Electronic Program Guide (EPG)
- Subtitle and Teletext Supported
- Parental Lock Facility
- HDMI HD Video/Audio Output
- Two High Speed USB 2.0 Ports
- 4-Segment LED Display for Information
- One Embedded Smart Card Reader
- Time Shifting and Video Recording
- Software Upgrade via USB and Network

Please check all package contents before using your product.

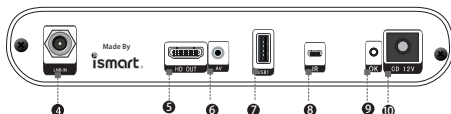
- |                   |  |
|-------------------|--|
| 1. Receiver Unit  | 4. HDMI Cable                                    |
| 2. Remote Control | 5. Power Cable                                   |
| 3. User Manual    | [Europe, UK, Australia, America plugs Optional ] |

## CONTROL PANEL



### Frontpanel

- Standby button: Turn on & off the receiver in standby mode.
- 4 Digital 7-segment LED Display.
- USB1 Host.



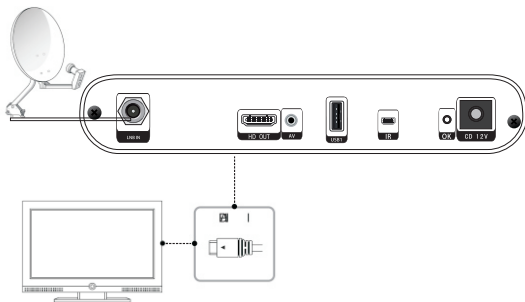
### Rearpanel

- LNB IN: Connect to the satellite dish for signal.
- HD OUT output
- AV output jack (Composite).**
- USB1 Host.
- Power Inlet: Connect to the detachable power cord.
- Key-OK IN
- 12v DC socket.

## REMOTE CONTROLLER



- ⏻ (Standby)  
To switch your receiver on from standby or standby to on.
- DEV: Press to mute the sound.
- AUDIO: Select the item in the audio mode.
- ⌚ (SLEEP): Press to adjust the sleep timer.
- 🔇 (Mute): Press to mute the sound.
- Numeric Keys(0~9, A~Z):  
Press to input Channel Numbers or Letters.
- TV/RADIO: Switch between TV or RADIO mode.
- ⏪ (RECALL): Show the information of previous channels being watched up to 10 channels.
- CH-/CH+: Change the channel or move cursor in the menu.
- VOL-/VOL+: Adjust volume or move cursor in the menu.
- ACCESS: Recover the system connection when the connection is failed or not working of internet application.
- GAME: Native games (Sudoku, Gobang, Tetris, Boxman, Hitrat) being provided as default.
- MENU: Press to display the Main Menu.
- EXIT: Press to escape from the current mode.
- Navigation Keys: ◀ ▶ ▲ ▼ .
- OK: Press to select the item in the menu or to list the TV/Radio channels.
- INFO: Display the information of the current program.
- EPG: Display the Electronic Program Guide.
- USB (USB): Press to go to USB Media for movie, photo, text and PVR recorded contents.
- FAV: Press to display Favorite Channel List.
- SAT: Press to display the satellite lists.
- Mosaic (YELLOW): Display multi-pictures.  
Timer (BLUE): Display Timer lists for each channel.  
SUB (GREEN): Display the Subtitle.  
TXT (RED): Display Teletext information.
- Recording and PVR Keys:  
● (REC) / ■ (STOP) / || (PAUSE) / ▶ (PLAY)  
◀◀ (PREV) / ▶▶ (NEXT)  
GOTO / A-B / SLOW
- ⏪ (Repeat): Two functions when press **REPEAT** key:  
a. Repeat a playback in USB media content.  
b. Show a signal/strength of selected channel for satellite installations when channel view.
- PAGE-/PAGE+: Press to page up/down in the channel list.
- 🔍 (ZOOM IN)/🔍 (ZOOM OUT)/ ZOOM

**1. Connecting to TV set and Satellite Dish via HDMI cable**

# GETTING STARTED

## I.1 First Installation

When the power is ON at first time after the factory or reset, this menu shall be displayed for setting up some important configures. To skip this menu, press **EXIT** key and **MENU** key to bring up the Main MENU directly.

## I.2 Main MENU

Press **MENU** key, it will display 15 subsidiary icons as below;  
This MENU provides 32bits colors & graphics, simple UI structure and user-friendly icons in usage of it like Smartphone.

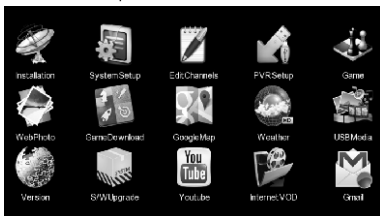


Figure1 Main MENU

## I.3 Shortcut Keys

- Swap TV/RADIO mode: Press **TV/RADIO** key to change the program list mode between TV and Radio.
- INFO Banner: Press **INFO** key to view the detailed information of current program. It will display SD/HD with H/V resolutions, audio encodings, audio encodings, multi audio, Teletext/Subtitle, and FAV. Press **INFO** key twice, then it will display extended information of channel such as service provider name, network name, CA system, CA operation mode, and a detail EPG.



Figure 2 INFO banner display

- Undo Channel: Press **RECALL** key to show the information of previous channels being watched up to 10 channels.
- System Connection Recovery: Press **ACCESS** to recover the system connection when the connection is failed or not working of internet application.
- Timer: Press **Timer(Blue)** key to set the time for reserved an each channel to view.
- Sleep Timer: Press **SLEEP** key. This function shuts off the power after a preset amount of time. There 7 time modes that can be selected such as OFF, 10, 20, 30, 60, 90, and 120 minutes. The default is OFF. User can toggle the **SLEEP** key to set the timer.
- FAVOURITE: Press **FAV** key to enter Favourite Groups window for detailed setup.
- AUDIO: Press **AUDIO** key to select multi audio such as language and stereo.



- i) Channel List with simple EPG:  
 Press **OK** key whilst watching a channel to open the Channel List as in Figure3.
- The Channel List supports four categories for listing the channels. It shows not only channels but also Now/Next EPG to each channel.

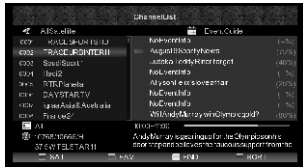


Figure3 Channel List display

- j) Teletext & Subtitle: Press **TXT(RED)** or **SUB(YELLOW)** key, respectively. It will enable the function of Teletext and Subtitle as below, if available.



Figure4 Teletext



Figure5 Subtitle

- k) Device Selection: Press **DEV** key to configure the USB memory device.
- l) EPG: Press **EPG** key to enter into the EPG, if available.
- m) USB Multimedia: Press **USB** key or select USB Media on Main MENU to enter the USB media payer.
- n) **II (Pause)**: There are two functions when press **II (PAUSE)** key as below.
1. Make a pause to the playback of a recorded program or pause a current watching video.
  2. Start to recording for Timeshift when the mode of Timeshift is set to PAUSE in PVR Setup submenu.
- o) **⏮ (Repeat)**: There are two functions when press **REPEAT** key as below.
1. Repeat a playback of a recorded program in USB media content.
  2. Show a signal/strength of selected channel for satellite installations when channel view.

## I.4 Recording (PVR)

Recording would be restricted in the transponder (TP) of the channel that is recording. That is, channel change is only enabling in a TP while recording. To go to other TP/Satellite, then press **II (STOP)** key to exit. This is inevitable limitation of single tuner recording method. Press **● (REC)** key to start record, system will has 3 seconds for initialization as shown in the Figure 6 and 7.

## GETTING STARTED

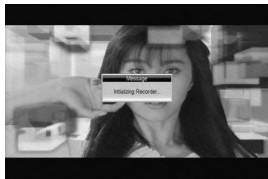


Figure6 REC Initializing

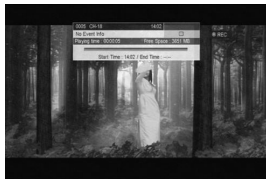


Figure7 REC Info

When initialization success, the screen lift top will show **REC** icon, recording and playing current program. Press **INFO** key to watch current recording information as shown in figure 2.11. Press **STOP** key while recording, will stop record and resume normal playback mode. In the recording, press **REC** key to set timer for subscribe stop record (or reset the time optionally and can set the time length as cancel (00:00), or user define length).

### [Significant Tips]

1. Press **INFO** key while recording, it shows all lists being recorded on local storage. It can be playback pressing **OK** key and press **■** key for stop playing.
2. Press **▶▶** or **◀◀** while recording, then it moves fast forwards or fast backwards like Timeshift function. Also, press **▶** key for playback after forward/backward of recording content. To stop Timeshift, press key and press **■** it once again then it stops recording.

### Remark:

1. When USB/Card memory space is insufficient while recording, system will show prompt message then stop recording and resume normal playback mode.
2. In the recording, if a write failure happened is by reason of storage bad track problems, system will show prompt message and try again.
3. In the recording, you also can operation Main MENU, EPG, TTX, Subtitle and so on function like normal play back mode.

### I.5 Timeshift (PVR)

- a) First, user need to set Timeshift function to be enabled. Go to PVR Setup and set Timeshift as Pause or Auto mode.
  - Pause mode: It starts to record live stream when user press **PAUSE** key.
  - Auto mode: It records live stream automatically.
- b) Press **PAUSE** key can into Timeshift mode, then the **TIMESHIFT** icon will be shown at screen lift top area, and record program play will beginning at recording start time.
- c) In time shift mode, when press **STOP** key will exit time shift mode and turn to playing current program.(recording is still going on)
- d) In time shift mode, when operate fast forward, if playback time is catch up current program playing time, then system will automatic exit time shift mode and turn to playing current program. (recording is still going on)
- e) In time shift mode, info banner looks like recording, but display time is dispersion of current playing content time with live program time, and use cursor prompt the relative position of current playing content in total recording content.

There are 5 options under this directory.

1. Satellite Setup
2. Satellite List
3. TP List
4. USALS Setup
5. Motor Limit Setup

**Note:** This can be entered via inputting passwords.  
(default password is 0000).



Figure 8 Installation

## II.1 Satellite Setup

On the installation menu, press  $\uparrow/\downarrow$  to select the item **Satellite Setup**.

1. Satellite: Choose a satellite from the database and set up the following parameters. There are many satellites being stored in default.
2. LNB Frequency: Select the local oscillation frequency.
3. Transponder: This is a satellite frequency which is used to display the signal quality, facilitating to adjust relevant parameters.
4. 22K: Set 22K tone signal to ON or OFF.
5. LNB Power: Set Power supply to ON or OFF for LNB use.
6. Tone Burst Mode: Set Tone Burst A, Tone Burst B and None. The default is OFF.
7. DiSEqC 1.0: Set Port A, B, C, D and Disable.
8. DiSEqC 1.1: Set Port 1, 2, 3...6 and Disable.
9. Motor Type: Set DiSEqC1.2, USALS or Disable.
10. Motor Setup: This menu can be entered as selection of DiSEqC1.2 by Motor Type.

## II.2 Satellite List

This Satellite List menu shows all satellites stored in system with LNB type, 22KHz setting, DiSEqC1.0/1.1 and Motor type. You can do ADD, EDIT, DELETE and SCAN action with Color Key on your Remote.

The screenshot shows a table with columns: NO., SATELLITE, LNBTYPE, FREQUENCY, POLARITY, and STATUS. The table contains several rows of satellite data. At the bottom, there are buttons for 'Add', 'Edit', 'Delete', and 'Scan'.

NO.	SATELLITE	LNBTYPE	FREQUENCY	POLARITY	STATUS
0001	SPRINTER 3000-1	SPRINTER	A	F	ENABLE
0002	SPRINTER 3000-1	SPRINTER	B	F	DISABLE
0003	SPRINTER 3000-1	SPRINTER	DISABLE	L	ENABLE
0004	SPRINTER 3000-1	SPRINTER	DISABLE	R	ENABLE
0005	SPRINTER 3000-1	SPRINTER	DISABLE	L	DISABLE
0006	SPRINTER 3000-1	SPRINTER	DISABLE	R	DISABLE
0007	SPRINTER 3000-1	SPRINTER	DISABLE	L	DISABLE
0008	SPRINTER 3000-1	SPRINTER	DISABLE	R	DISABLE
0009	SPRINTER 3000-1	SPRINTER	DISABLE	L	DISABLE
0010	SPRINTER 3000-1	SPRINTER	DISABLE	R	DISABLE

Figure 9 Satellite List

## II.3 TP List

You can move the cursor to **TP List** then press **OK** to enter into manual search page. TP List shows saved all the transponders in selected satellite, and every transponder maybe has some A/V channels. Then press the 4-color key on the remote controller: press the **?RED?** key to Add Transponder, the **GREEN** key to edit the TP, the **YELLOW** key to delete the TP, and the **BLUE** key to scan the TP in manual.

**Note:** Edit TP function is only possible on single TP. Move the cursor on the TP that want to edit, then press GREEN key to edit it. If press OK key to select TP, then edit key would be disappeared.

# INSTALLATION

## II.4 USALS Setup

There are three menus and 2 functional keys as below:

1. Menus: (1)My Longitude. (2)My Latitude. (3)Position from Google.
2. Functional keys: **RED** key for satellite setup and **BLUE** key for reset the positions.

USALS's setup is instant. It is an automatic method based on the entered Longitude and Latitude of your current location. Press **OK** to edit the position data on My Longitude and Latitude. The system will then automatically setup your motor. However, a satellite's position cannot be adjusted and saved.

The only way to finely adjust the motor is to edit the Longitude and Latitude settings by trial and error.

In order to avoid this error, the system supports **Position from Google** option as Figure 10 to get the exact position data from Google MAP via internet. Press **OK** on position from Google menu then, Google map function would be enabled and move the position. Zoom in & out and then, press **BLUE** key to get the position data that you want.



Figure 10 USALS Setup with Google MAP

## II.5 Motor Limit Setup

**Motor Limit Setup:** Set EAST/WEST extreme coordinate or disable it.

1. Disable Limits: No extreme coordinate
2. Set East Limit: Set up the eastbound extreme coordinate
3. Set West Limit: Set up the westbound extreme coordinate

**Continuing move:** Set move direction continuously.

1. Move east: Rotate in the eastbound way
2. Move west: Rotate in the westbound way
3. Stop: Pause

**Move Step:** Press ◀ once and MOTOR rotates to the east by one step;  
Press ▶ and MOTOR rotates to the west by one step.

**Go to Reference:** Go to a reference position.

**Note:** Audio/Video Channel can be scanned in Satellite Setup, Satellite List, TP List, or USALS Setup menu. Press **Blue** key in submenus and then, following would be popped up once scan is enabled, and press **OK** to start Channel Scan.

Scan	
Polarization	Horizontal or Vertical
Network Search	ON or OFF
Channel Type	All or FTA
Scan Type	Manual Scan, Auto Scan, or Blind Scan
<b>Press OK to start</b>	

There are 9 options under this directory.

1. OSD Setup
2. Video Setup
3. Audio Setup
4. Time Setup
5. Password Setup
6. Access Control
7. Network Setup
8. S/W Update
9. Factory Reset



Figure 11 System Setup

### III.1 OSD Setup

#### III.1.1 OSD Language

The system has the user interface supporting a couple of languages so that you can set language via OSD Language option:

English, German, Italian, Spanish, Portuguese, Dutch, Russian, Arabic, Thailand, French.

#### III.1.2 OSD Time Out

INFO banner will appear a time in 1 sec, 2 sec, 7 sec or OFF. The default is 5 sec.

#### III.1.3 OSD Transparency

OSD transparency set as 0 to 60%. The default is 0%.

#### III.1.4 1st /2nd Preferred Subtitle

To be set the 1st and 2nd preferred subtitle language.

#### III.1.5 Auto Subtitle Enable

Enables/Disables the hearing impaired.

#### III.1.6 1st /2nd Preferred Audio

Sets the preferred audio to English, French, German, Italian, Spanish.

### III.2 Video Setup

Video setup provides convenient TV input mode.

#### III.2.1 Contrast/ Brightness/Saturation

You can set system contrast/brightness/saturation. The default is 12 for all.

#### III.2.2 HUE

The default is 0.

#### III.2.3 SPDIF

Used to select AVC mode Mute, PCM and Bitstream.

#### III.2.4 Aspect Ratio

Video output mode can change the mode of video output, you can adjust TV mode according to the actual situation of you receiving equipment.

#### III.2.5 Video Output

Video Output mode can change the mode of video output, you can adjust TV mode according to the actual situation of you receiving equipment. The default value is YUV.

#### III.2.6 Video Resolution

Video Resolution mode can change the Resolution of video output, you can adjust TV mode according to the actual situation of you receiving equipment.

#### III.2.7 HDMI Color Space

HDMI Color Space can change the mode of video output, you can adjust TV mode according to the actual situation of you receiving equipment.

#### III.2.8 HDMI Deep Color

HDMI Deep Color can change the mode of video output, you can adjust TV mode according to the actual situation of you receiving equipment.

### III.3 Audio Setup

It can set Digital Audio Setup such as SPDIF and HDMI audio.

## III.4 Time Setup

It can set the time and date of the system in auto or manually. In auto, it is required to set the time using GMT in Time Zone.

**Note:** If no PMT is coming in a stream, the time information might be not set in correct.

## III.5 Password Setup

Password setup menu can provide convenient locked setup. User can set the system lock (in default is ON) and parental rating from 0 to 18. The default password is **0000** and it requires entering this menu for changing.

## III.6 Access Control

Select this submenu to setup CA applications as below.

1. Smartcard Info: Select this submenu to check the smartcard being inserted.
2. CcCam Client Setup: Select this submenu to setup CcCam client.
  - a) Update Files by USB: Load a file (cccam.cfg, constant.cw or softcam.key) from USB memory.
  - b) Cccam.cfg Edit: Edit cccam.cfg file and it is protected as 4 digits pin code. It is **0000** as default and it can be newly set in Password Setup.
    - CcCam Edit: Edit server and account.
    - Load Balance: Set server's connection load as ON or OFF.
  - c) Constant.cw Edit: Edit a loaded constant.cw file as BISS.
  - d) Softcam.key Edit: Edit a loaded softcam.key file.
3. Mgcamd Plug Setup: Select this submenu to setup Mgcamd plug setup.
  - a) Update Files by USB: Load a file(Newcamd.list) from USB memory.
  - b) Newcamd.list Edit: Edit a loaded Newcamd.list file.
4. Twin Protocol Setup: Select this submenu to setup RS-232 parameters for external STB.

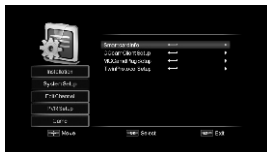


Figure 12 Access Control

## III.7 Network Setup

Select network connection method in **wired** or **wireless** via Link Type menu. The default is **wired** mode. After chosen of link type as wired mode, then press **Config** option for setting the way of obtaining IP address either **DHCP**, **Sattic IP** or **PPPoE**. The default is **DHCP** mode.

- a) DHCP mode : Select DHCP mode and then the system will get the IP from DHCP server automatically.
- b) Static IP mode : IP address, Netmask, Gateway and DNS server shall be edited by user manually.
- c) PPPoE mode : If an external modem(xDSL or Cable) is used, then this option would be required.

In case of wireless, insert USB wifi adapter first and press Config option then it shows all available SSIDs of wireless LAN to be connected with encrypted password. Select a proprietary SSID and press OK to set all required parameters such as password, if required. After finish to set all, then scroll down to Link and press Link to connect. If it needs to set static IP configurations, press More to set IP. The default is DHCP mode same as wired. Please see Reference for available USB WiFi adapters.

### III.8 S/W Upgrade

The software of the STB can be updated in three ways via **RS-232**, **USB** or **Internet**.

#### 1. Upgrade via USB

USB/Card upgrade is a fast and convenient way to upgrade, User simply copy the upgrade file into the USB disk, and push the USB device into the system USB interface, then you can upgrade by the following step as below:

#### 2. Upgrade via Network

S/W upgrade via network is using internet line.

- Press **OK** on Upgrade via Network page, and then the Network Upgrade message would be popped up as in Figure 13.
- The Network Upgrade message shows the version of s/w being available on the server and current s/w version on the system for comparison by user whether it needs to update.
- If the new s/w is available then user can press **YES** to start the update the s/w via internet.

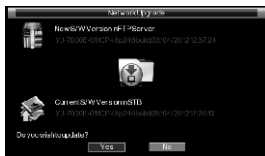


Figure 13 Network Upgrade



Please pay attention to followings. It may be cause of s/w damage.

- Do not turn off the power during upgrade.
- Do not unplug the network cable.

### III.9 Version (FTA S/W version only)

View the information about the software and hardware.

- Used main chip
- Security: If security chip is inside, then s/w is copy protected.
- H/W version
- S/W version
- S/W Build Date

**Note:** This version information is only available on Main MENU for

Ethernet built-in model such as KD-9000E HD s/w version.



Figure 14 Version

### III.10 Factory Reset

This function deletes all settings and channels from your product and restores factory default settings. It can save all satellites and channels after factory reset is selected.

**Note:** Information in CCcam.cfg will not be deleted during factory reset.

The STB software can be updated by RS-232 interface as well, if STB has a RS-232 connector. In this case, the UART upgrade tool.exe shall be required to download the s/w. To start download, start download at PC and turn on STB. However, this upgrade way is not recommended but may be feasible in the case of software recovery from the damage. To get UART upgrade tool software, please contact local sellers.

## EDIT CHANNEL

There are 7 options under this directory.

1. Edit Channel
2. Edit Favorite
3. Edit PIDs
4. Edit Boot Channel
5. Delete All Channel
6. Load DB
7. Save DB



Figure 15 Edit Channel

### IV.1 Edit Channel

1. Satellite Selection: Press the **SAT** key to select a satellite.  
The default is all satellites.
2. Other Selections: Press **INFO** key to select followings;
  - a) Rename: Move the cursor that you want to rename a channel, and then press **INFO** key and select Rename.
  - b) Group: Select channels being sorted as FTA, Scrambled, 0~9, A to Z, and others.
  - c) Select All: Select all channels in the list.
  - d) Unselect All: Unselect all channels in the list.
  - e) Select TP: Show channels that you select TP.**Note:** This function is not working on All Satellites. Select a satellite first.
3. Lock: Select channels that you want to lock. Press **OK** key to select channels and **RED** key to lock selected channels.
4. Skip: Select channels that you want to lock. Press **OK** key to select channels and **GREEN** key to skip channels.
5. Move: Select channels that you want to move. Press **OK** key to select channels and move the cursor that you want to locate, then press **YELLOW** key to move selected channels.
6. Delete: Select channels that you want to delete. Press **OK** key to select channels and **BLUE** key to delete selected channels.

### IV.2 Edit Favorite

Setup favorite lists/groups of channels accessible from the **FAV** button while watch a channel.

1. Press **SAT** key to select the satellite prefers to edit.
2. Press **1-8** to add a channel to a favourite group.

### IV.3 Edit PIDs

Add or change the PIDs of the channel for audio and video.

1. Add: Press **RED** key to add new channel with PIDs.
2. Edit: Press **YELLOW** key to change PID of channel being stored.

### IV.4 Edit Boot Channel

This allows you to set the preferred channel after boot-up.

### IV..5 Delete All Channel

This allows you to delete all channels being scanned.

### IV.6 Load DB

This allows you to load DB from USB.

### IV.7 Save DB

This allows you to save DB to USB.



There are 7 options under this directory.

1. PVR File Format
2. Max File Size
3. Default PVR Storage
4. Timeshift Mode
5. Timeshift Length
6. Timeshift to Record
7. \*\*\*Factory Menu



Figure 16 PVR Setup

### V.1 PVR File Format

Either of options, TS/PS, can be selected to set the format of the file to be stored; if TS mode is selected, related PSI/SI table information in code stream can be recorded during the record of the program, or if PS mode is selected, AV data are recorded only.

### V.2 Max File Size

Any of options, 4G/3G/2G/1G, can be selected to set the size of the file to be recorded; if the size of the file exceeds the setting size(up to 4GB) during the record of the program, the record program will divide the file into plurality of files with the set sizes.

### V.3 Default PVR Storage

Any of options, USB1/USB2, can be selected to determine USB equipment for storage of the file to be recorded.

### V.4 Timeshift Mode

Any of options, AUTO/OFF/ PAUSE, can be selected to set the status of the current Timeshift, if AUTO is selected, Timeshift operation will perform automatically on the background, can change channel but discard previous Timeshift buffer and restart a new one; if OFF is selected, Timeshift operation will stop; if PAUSE is selected, Timeshift operation will be manual start by PAUSE key, screen freeze at once, can resume by PLAY key, allow channel change only in the same TP, Timeshift buffer only record first channel; and if the preceding three options are changed when the AUTO is selected, Timeshift will restart.

### V.5 Timeshift Length

Any of options, AUTO/30min/1h/2h, can be selected to set the time depth of the Timeshift; if AUTO is selected, the time depth of the Timeshift is depended on the available size of USB equipment; if any of options, 30min/1h/2h, is selected, the usable time depth of the Timeshift is 30min/1h/2h in the case that the available size of USB equipment is big enough, whereas, the usable time depth of the Timeshift is depended on available size of USB equipment.

### V.6 Timeshift to Record

Either of options, ON/OFF, can be selected. If ON is selected, Timeshift operation will stop and the recorded file buffered by the Timeshift will be stored in USB equipment; if OFF is selected, Timeshift will operate continuously and the recorded file buffered by the Timeshift will not be stored in USB equipment.

### V.7 \*\*\*Factory Menu

This is not user's function. Do not use this function and it is only for special purpose by factory. It requires a password to enter this function. Please contact local sales to know the password, if necessary.

## GAME & MULTIMEDIA

This submenu gives user to enjoy various multimedia services such as native game, game download, web-based applications, YouTube, Google mail and internet VOD.

### VI.1 Native Games

Press MENU and select Game. There are 5 native games (Sudoku, Gobang, Tetris, Boxman, Hitrat) being provided as default.

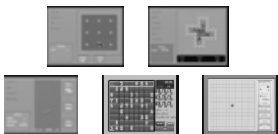


Figure 17 Native 5 games page

### VI.2 Game Download

There is the specified website([www.native32.com](http://www.native32.com)) that supports hundreds of 32bits games to be downloadable.



Game Download



Figure 18 Native32 games being downloaded

Go to **MENU** and select **Game Download** icon to enter the function download the games into the **USB** storage.

After finish the download, go to **USB** and select **Native32 Games** mode. Select the game and play.

**Note:** USB storage shall be plugged before game download.

### VI.3 Google MAP, Yahoo Weather and Web Photo

There are 3 data API-based internet applications as below, and it can be accessed by pressing the icon on Main MENU when it has selected.

1. Icons for Google MAP, Yahoo Weather and Web Photo.



Google MAP



Weather



Web Photo

2. Screenshot of Google MAP and Yahoo Weather.



Figure 19 Google MAP and Yahoo Weather

## VI.4 YouTube

Go to Main MENU and select YouTube icon to enter the function.



YouTube

There are 7 options under this function.

1. 4 Video Groups (Most Popular, Most View, Top Rated, and Category)
  2. Search YouTube Contents by keypads
  3. My Video (Move the cursor on the video and press **FAV** key to assign it as favorite)
  4. Setup the country that you live.
- Press **II** key to pause the video playing.  
 Press **▶** key to play the video from pause.  
 Press **MUTE** key to off the audio.  
 Press **FAV** key on Video list to assign the video into MY Video as Favorite.  
 Press **REPEAT** key to play it again when video is playing.



Figure 20 YouTube Video Lists

## VI.5 Internet VOD

This is an internet VOD service that offers the best in streaming **Video On Demand** only or adult and so **it is restricted to 18 years and over.**



Internet VOD

### Remark:

Selection to connect mode of it in either direct or proxy. Press **RED** key on this menu.

**Note:** Pin codes (**0000** as default) requires entering this menu.

The VOD site is locked with pin codes and can be connected in either direct or proxy mode due to some reasons.

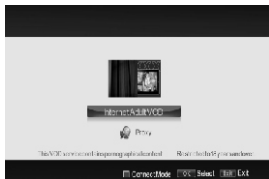


Figure 21 Internet VOD

## VI.6 Google Email (Gmail)

Gmail is a free, advertising-supported email service provided by Google. Users accesses Gmail as secure webmail, as well via POP3. In this s/w, Gmail is provided on embedded UI as below. Press **Gmail** icon in menu and then, firstly setup menu will be displayed as Figure 21.



Gmail

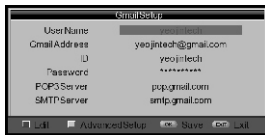


Figure 22 Gmail Setup

## GAME & MULTIMEDIA

When Gmail is entered, Setup menu will be shown that it is mandated to be filled. .

1. User Name: Arbitrary name of email account.
2. Gmail Address: User's Gmail address.
3. ID: User registered email ID.
4. Password: User registered email password.

**Note:** If user doesn't have Gmail account, then user firstly registers the email account on Gmail website. Please visit <http://mail.google.com> and register the Gmail account first.

After success to setup the Gmail, user can use it as below



Figure 23 Gmail Inbox



Figure 24 Gmail View



Figure 25 Gmail Compose

**Note:** Gmail message inbox is unlimited to use in USB memory size. It can process the attachment file of email to USB memory.

### VI.7 USB Media Player

Select and play a movie, photo, music, EBook, etc from a list of them that are stored in the USB storage device.



Figure 26 USB Media Player



Figure 27 MOVIE on USB Media Player

Press **USB** key or **USB media** icon on Main MENU, and then above menu would be shown. Move MOVIE, Photo, Music or EBook using left/Right key and press **OK** to enter the sub-directory of files.

1. MOVIE: Select **MOVIE** icon and press **OK** to enter the USB device. It shows all video files and previews the video that the cursor is on it. It supports formats such as MPG, AVI, VOB, DAT, ASF, MKV, RM, WMV, TSF, and QuickTime (QT).
2. MUSIC: Select **MUSIC** icon. It supports formats such as WMA, WAV, DTS, RA and MP3.
3. PHOTO: Select **PHOTO** icon. It supports formats such as JPG, TIF, PNG, GIF and BMP.
4. Native32 GAME: Select **Game** icon. It supports NES and Native32 games.
5. EBOOK: Select **EBOOK** icon. It supports .txt file.
6. PVR File Manager: Edit only recorded files. It supports Delete, and Rename.
7. File Manager: Edit all files. It supports Delete, Rename, Move, and Copy.

**Note:** Press **DEV** key to change the mode from/to Local storage/Network Storage.

In case of trouble, please refer following table to solve problems.

<b>SYMPTOMS</b>	<b>CHECK POINTS</b>
Power is not "ON"	Check the power cord.
No Sound	Check the audio jack. Check whether the Mute function is on or not.
No Satellite TV Channel	Check the direction of antenna. Check the connection of antenna cable. Check whether the channel search process has been done correctly.
Poor Video & Audio quality	Check whether the signal level is proper or not. Check whether there is damage on the antenna or not. Adjust the height and direction of antenna.
Remote Control is not working	Check whether the batteries are properly fitted into battery rack of your remote control or not. Make sure the remote sensor is not broken.

## TECHNICAL SPECIFICATIONS

TECHNICAL SPECIFICATIONS		
Front Panel	Display	4-digital 7 segment LED display with Green color
	Smart Card Slot	1
	USB 2.0	1
	Key	Standby, Menu, Exit, CH-, CH+, VOL-, VOL+
Rear Panel	Power Switch	1
	Sat-IF Input/Output	2 x F-types socket
	Connection TV	1 x Scart socket (SCART model)
	Video Output(Analogue)	3 x Cinch socket (YPbPr)/1 x Cinch socket
	Video/Audio Output(Digital)	1 x HDMI
	Audio Output(Analogue)	2 x Cinch socket (AV model)
	Ethernet	1
	RS-232	1
Power	USB 2.0	1
	Mains Voltage	100-240V/50-60Hz
	Power Consumption(Max.)	20W
RF	RF Range	90~2150MHz
	Modulation, FEC	DVB-S/DVB-S2 standard
Video	Video Resolution	1080p,1080i, 720p,576p,
	Video decoding	MPEG-2, MPEG-4 compatible
	Input data rate	2-45 MSymb/s
	S/N	>53dB
Decoding	Decoding	AC 3, MPEG-4 (AAC-HE), MPEG-1, Layer 1, 2 and 3
	Sampling Rate	32/4.1/48kHz
	S/N	>65dB
LNB	LNB Supply(Horiz./Vert.)	90~2150MHz
	Control Signal	22kHz ; ToneBurst ; DiSeqCTM1.0/1.1/1.2
General	Dimension(W x H x D)	220 x 40 x 160 mm/180 x 40 x 110 mm
	Weight	App. 0.7Kg

