

X9 Quick Start Recording Guide

There are three ways to record TV programs on your **DVBS2**:

1. Instant Recording

This method can be used if the program you wish to record is currently on. To do this:

- *Switch your DVR to the channel that you wish to record
- *Push the red record button **(1)** on your **DVBS2** remote.
The Receiver will automatically begin recording.
- *Please note that the default record duration is 3 hours.
If you wish to change this, press the red record button **(1)**

2. EPG (Electronic Program Guide)

This method can be used if the program you wish to record is on within the next 7 days.

- *Press the "Guide" button **(2)** on your **DVBS2** remote.
- *Use the Ch up or down buttons **(3)** to highlight the channel that the program is on that you wish to record. Press OK
- *Use the VOL> button **(4)** to highlight the channel name section of the EPG menu
- *Use the Ch up or down buttons **(3)** to highlight the program you wish to record.
- *Press the red record button **(1)** while the program is highlighted. The selected program will then appear in red.
- *Press the 'Exit' button **(6)** to return to normal viewing.

This program will automatically be recorded on the **DVBS2**.

3. Manual Timer Record

This method can be used to record at specific times.

- *Press the "Guide" **(2)** button on your **DVBS2** remote.
- *Use the Ch up or down buttons **(3)** to highlight a slot that is "OFF"
- *Press OK button to select this timer slot.
- *Use the VOL> or < buttons **(4)** to change the "State" to how often you want the DVR to record at the desired time (Once, Daily, Weekly, Mon-Fri).
- *Use the Ch down button **(3)** to highlight the next option, and the VOL> or < buttons **(4)** to change the setting for each option.
- *Once the last option is set, press the "Exit" button **(5)**; you will see "Do you want to save".
- *Use the VOL > or < buttons **(4)** to highlight "Yes" and press "OK" **(6)**
- *Press the "Exit" button **(5)** twice to return to normal viewing

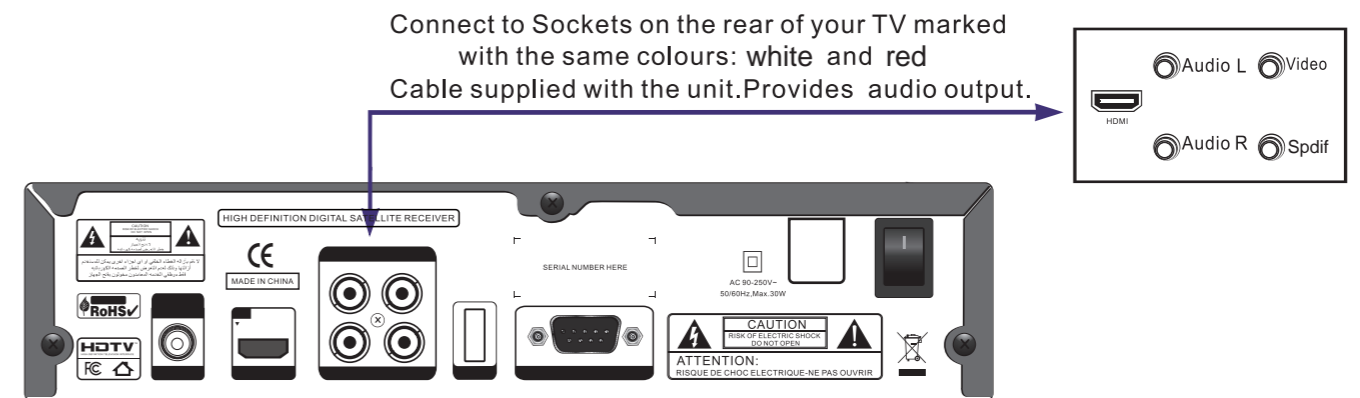
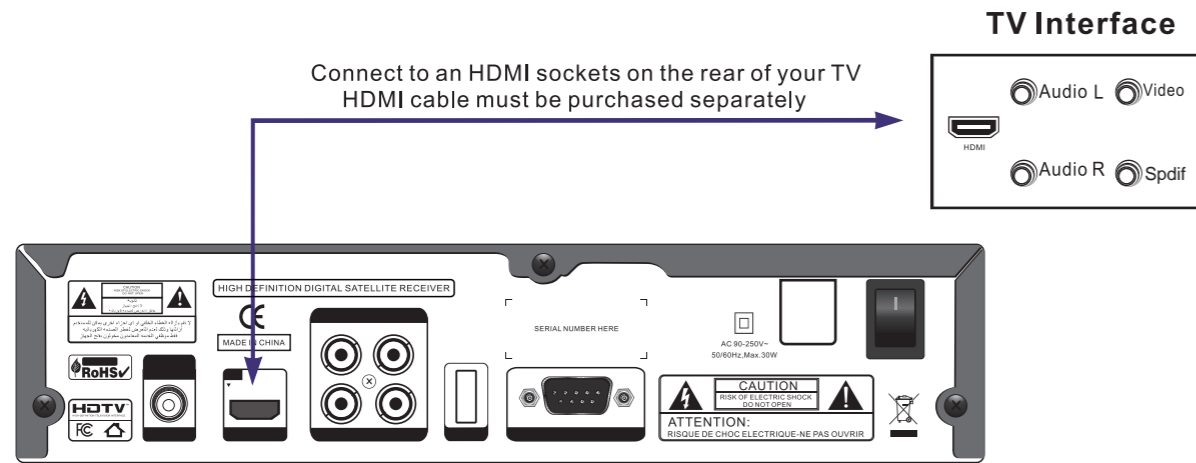


N.B. For more detailed information please refer to the supplied CD users manual.

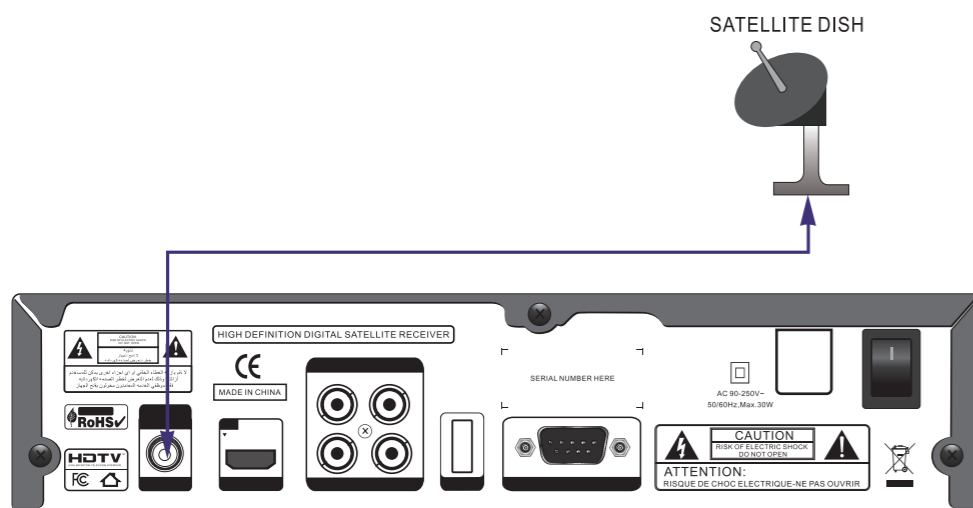
X9 Quick Start Guide

Choose one of the following connection methods

Connecting via HDMI



Connecting the SATELLITE DISH to the DVBS2



Connecting the Wireless Network to the DVBS2

